



**Veterinární a farmaceutická univerzita Brno
Fakulta veterinární hygieny a ekologie
Ústav ekologie a chorob zvířet, ryb a včel**

VYBRANÉ HISTOLOGICKÉ PREPARÁTY

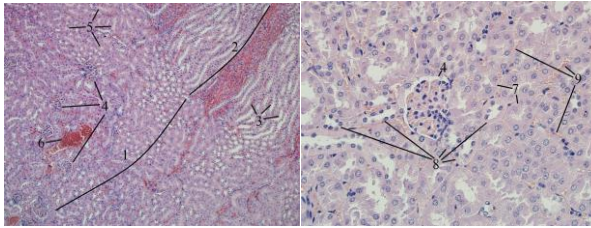
PROJEKT IVA 2019FVHE/2190/45

Mgr. Aneta Kubíčková

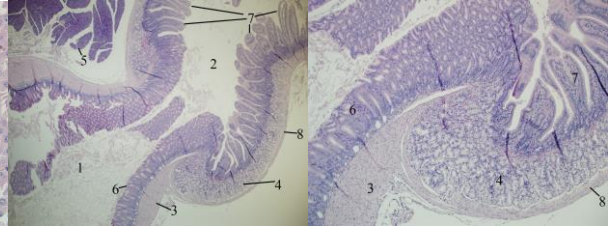
doc. MVDr. Hana Bandouchová, Ph.D., Dipl. ECZM

BRNO 2019

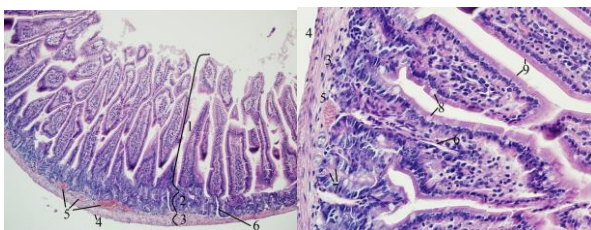
Ledvina



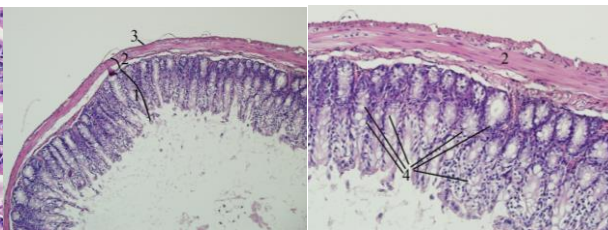
Pylorus



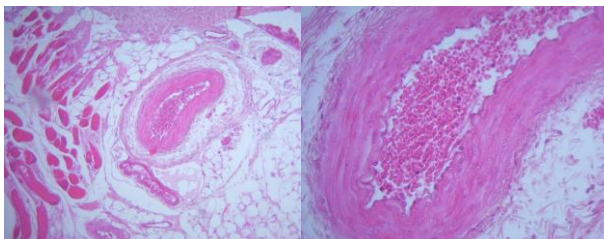
Tenké střevo



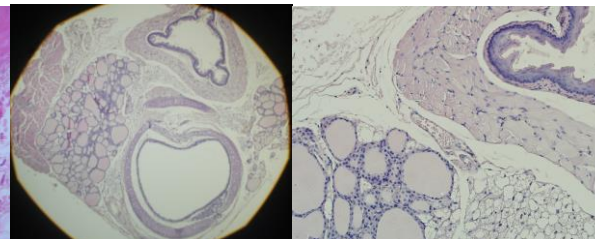
Tlusté střevo



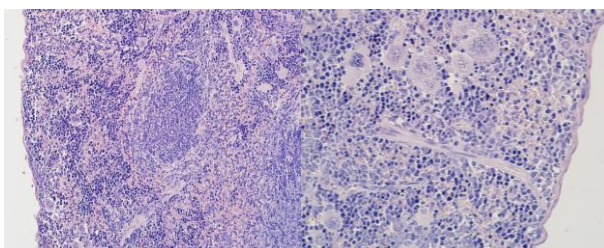
Cévy



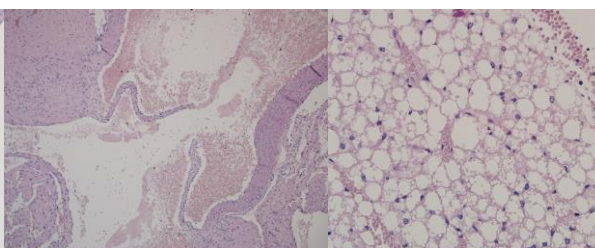
Průdušnice, jícen, štítná žláza



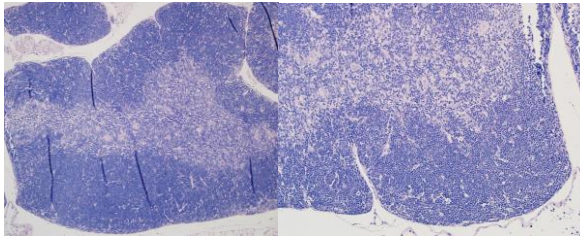
Slezina



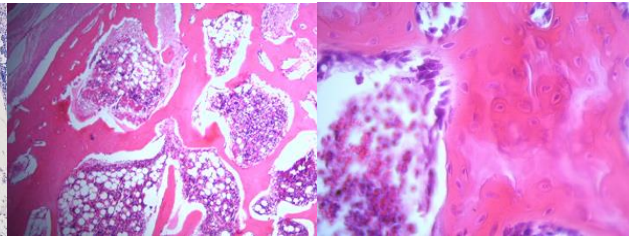
Srdce a hnědá tuková tkáň



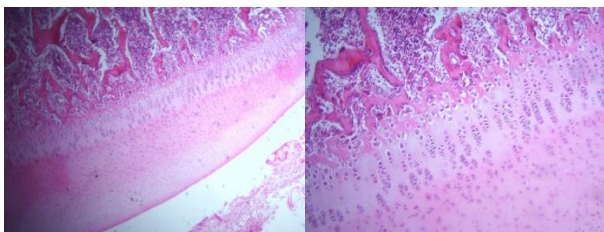
Brzlík



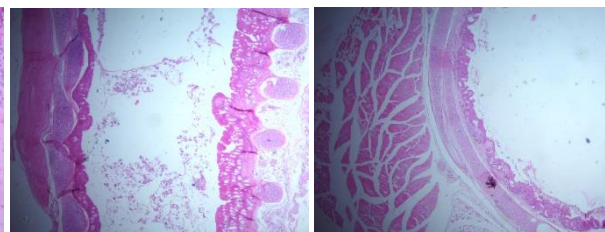
Spongiózní kost



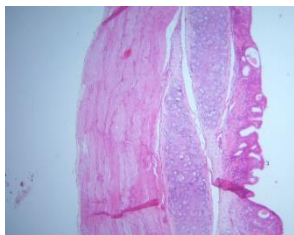
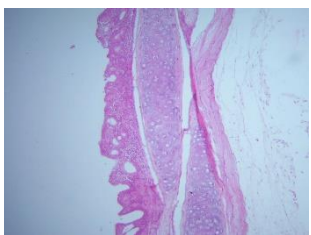
Chrupavka se zónou enchondrální osifikace



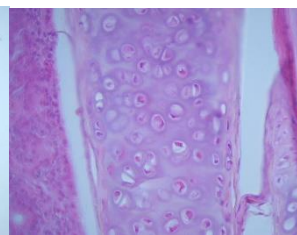
Průdušnice – podélný a příčný průřez



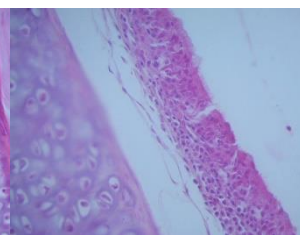
Průdušnice – průřez stěnou



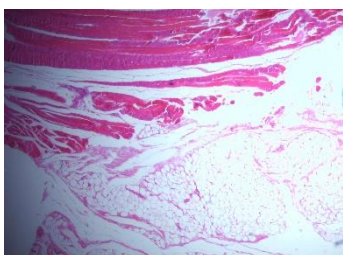
Hyalinní chrupavka



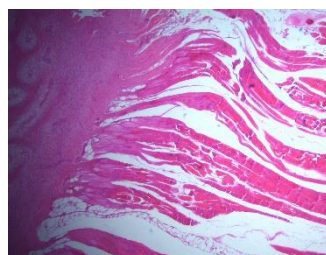
Respirační epitel



Kosterní svalovina a tuková tkáň



Kosterní svalovina – úpon



Kosterní svalovina – příčné pruhování

